

# MARATHA VIDYA PRASARAK SAMAJ'S KPG ARTS, COMMERCE & SCIENCE COLLEGE, IGATPURI

Take Ghoti, Tal. Igatpuri, Dist. Nashik,  
Maharashtra-422403 (MH)

AFFILIATED TO SAVITRIBAI PHULE PUNE UNIVERSITY,  
PUNE, MAHARASHTRA : ID. NO. PU/NS/ASC/023/1981

 [kpgcollegeigatpuri.ac.in](http://kpgcollegeigatpuri.ac.in)



*4.1.1 Institutional infrastructure and physical facilities for teaching- learning.*



Maratha Vidya Prasarak Samaj

K. P. G. Arts, Commerce and Science College, Igatpuri, Dist. Nashik

Affiliated to Savitribai Phule Pune University, Pune

Id.No.PU/NS/ASC/023/1981

www.igatpuri.mvp.edu.in

srcollege.igatpuri@mvp.edu.in

NAAC Accredited with Grade B (CGPA 2.52)

## INTERNAL QUALITY ASSURANCE CELL

### CRITERION- 4: Infrastructure and Learning Resources



#### 4.1 Physical Facilities

4.1.1 *The Institution has adequate infrastructure and physical facilities for teaching-learning. viz. classrooms, laboratories, computing equipment etc.*

#### Geo-Tagged Photographs



Maratha Vidya Prasarak Samaj

K. P. G. Arts, Commerce and Science College, Igatpuri, Dist. Nashik

Affiliated to Savitribai Phule Pune University, Pune

Id.No.PU/NS/ASC/023/1981

[www.igatpuri.mvp.edu.in](http://www.igatpuri.mvp.edu.in)

[srcollege.igatpuri@mvp.edu.in](mailto:srcollege.igatpuri@mvp.edu.in)

NAAC Accredited with Grade B (CGPA 2.52)

## TABLE OF CONTENTS

Sr. No	Particulars	Page Number
1	Classrooms	3-4
2	Laboratories	5-16
3	ICT-Enabled Facilities	17-19
4	Other	20-27
5	Drinking Water Facilities	28-30

# 1. Classrooms





## 2. Laboratories

### Computer Laboratory



## Chemistry Laboratory







## Physics Laboratory



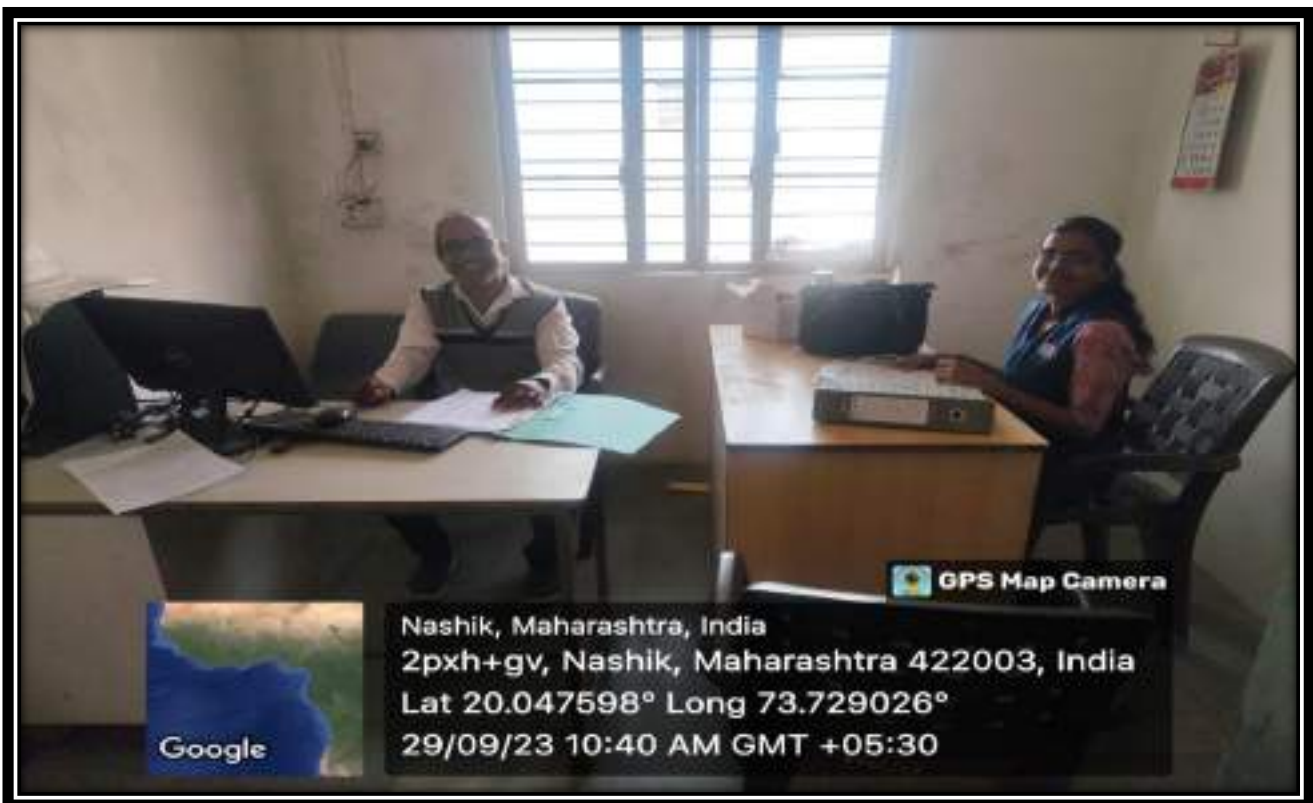
## Zoology Laboratory



## Botany Laboratory

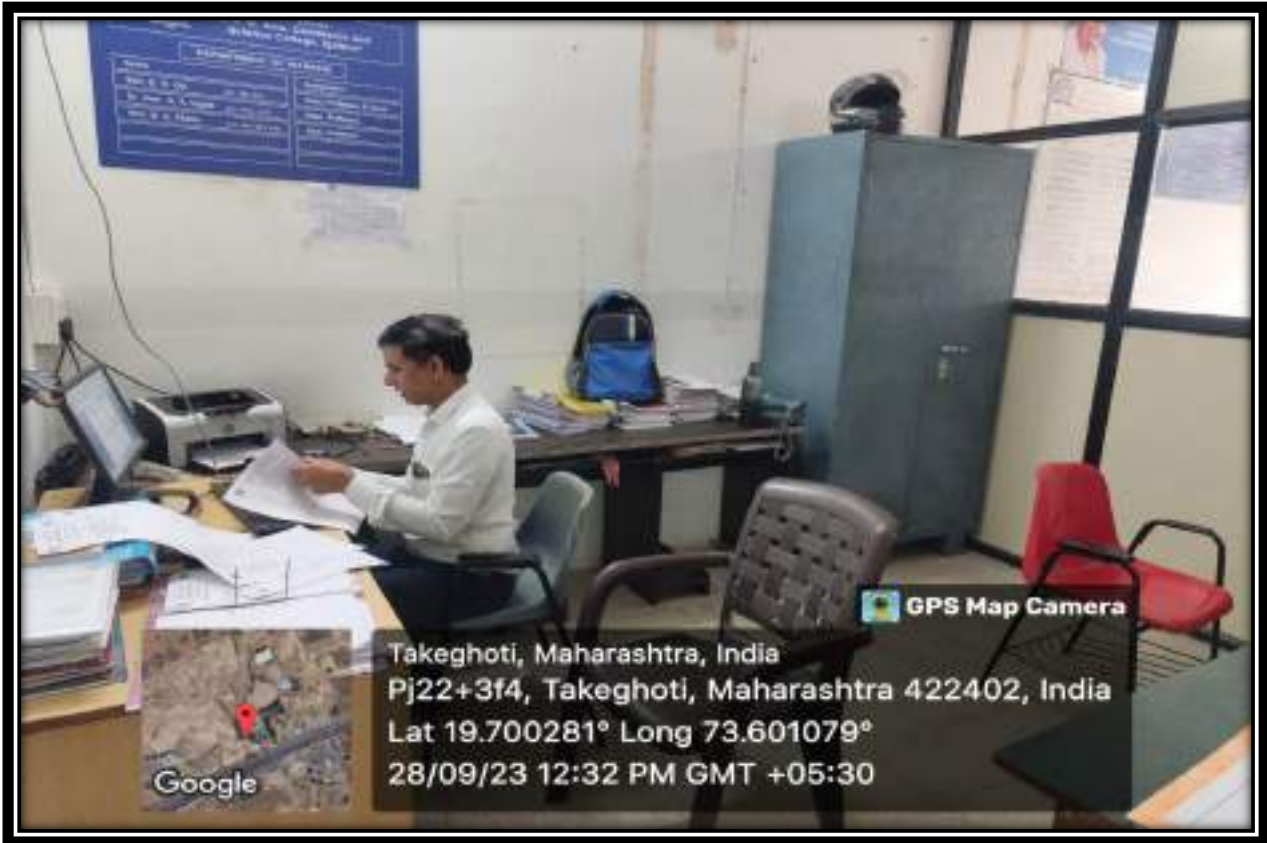


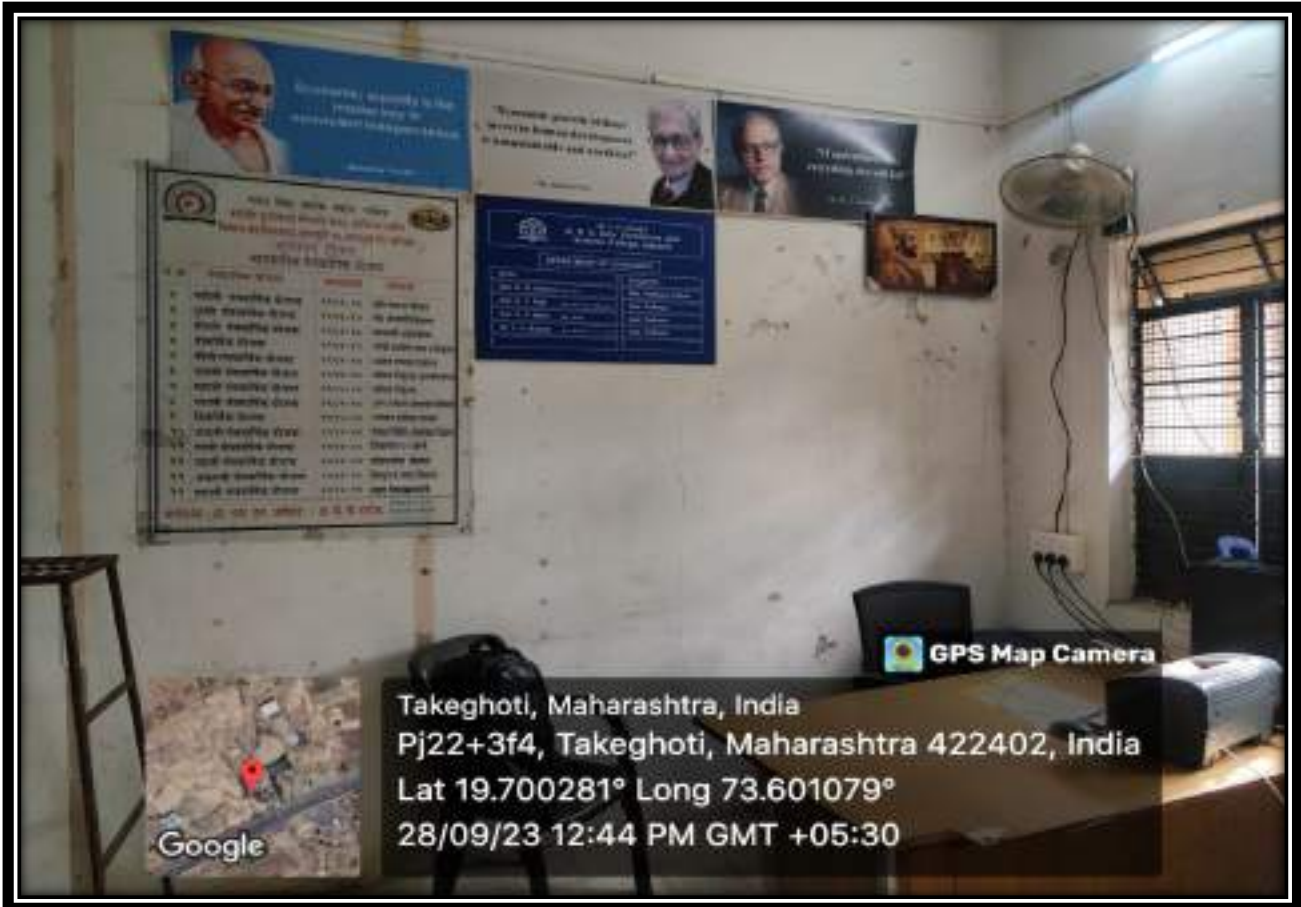
## Math Laboratory



## Language Laboratory





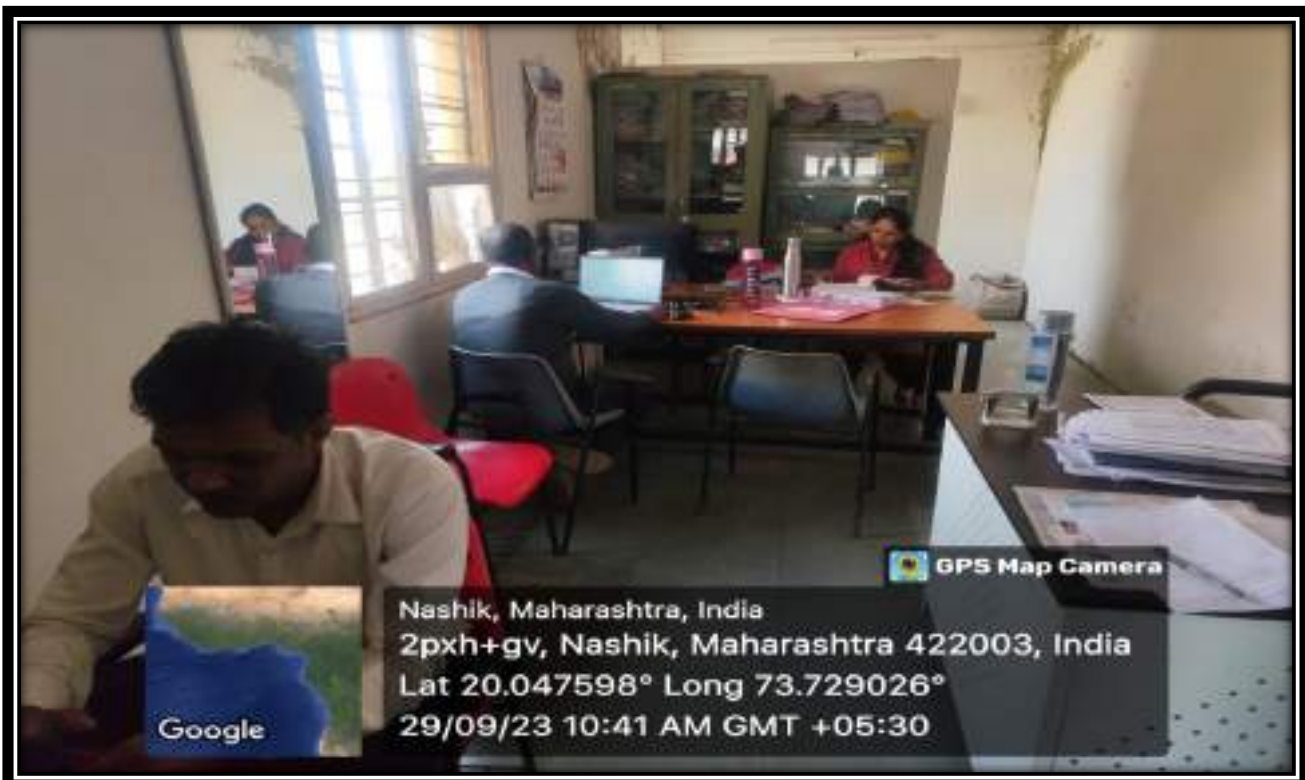
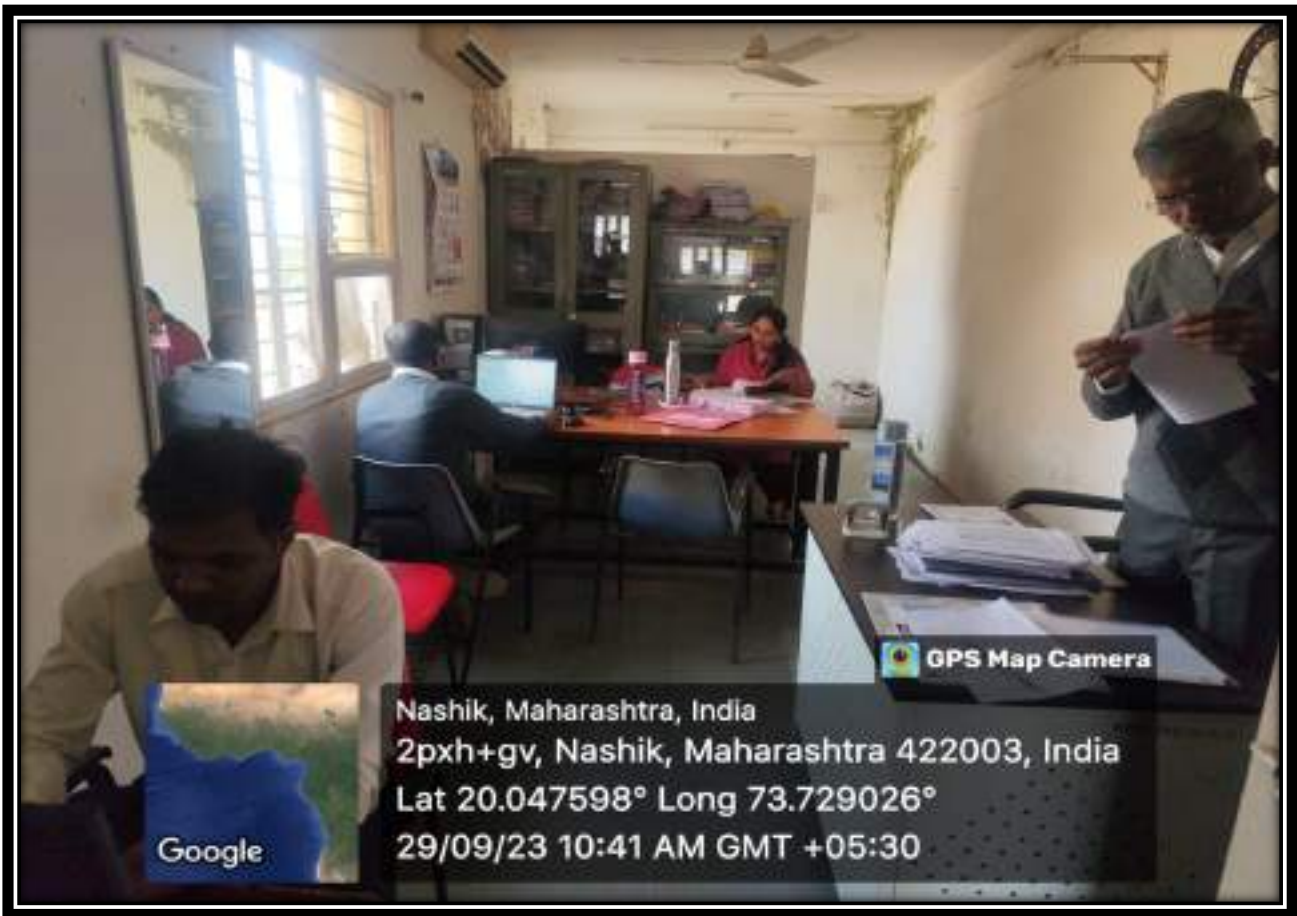


## Geography Laboratory



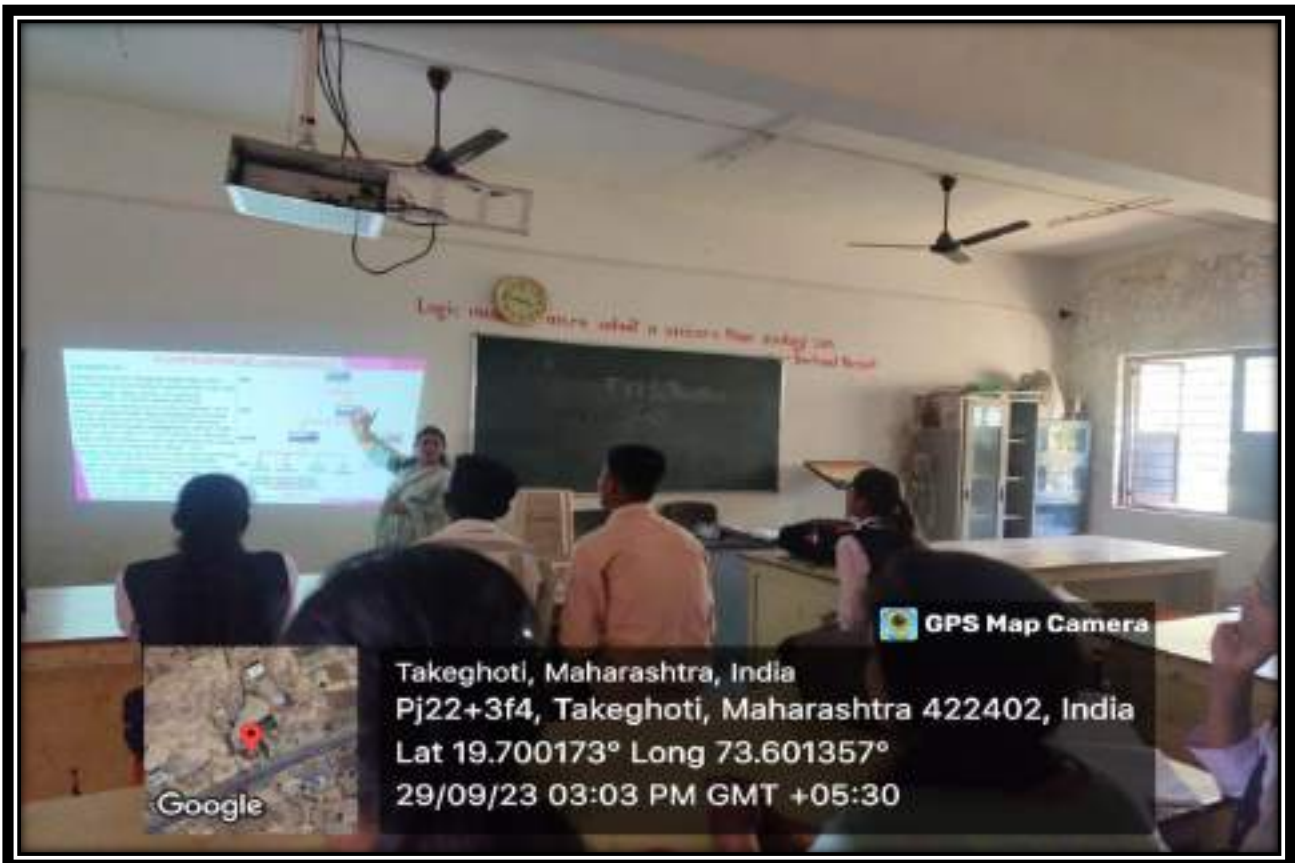


## Commerce Laboratory



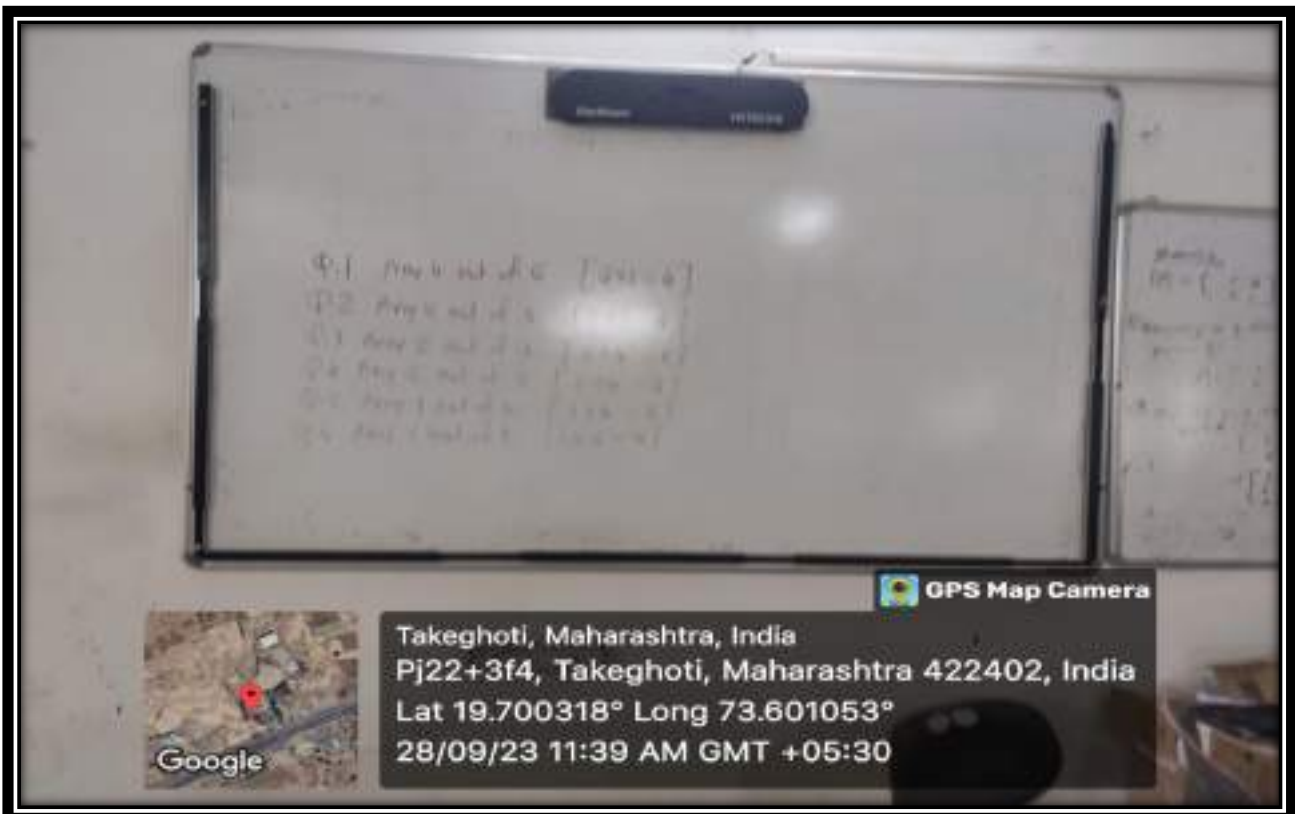
### 3. ICT-Enabled Facilities







**StarBoard**



## 4. Others

### College Main Gate





## College Garden (Botanical Garden)



## Parking-1



## Parking-2





## College Canteen



## Generator



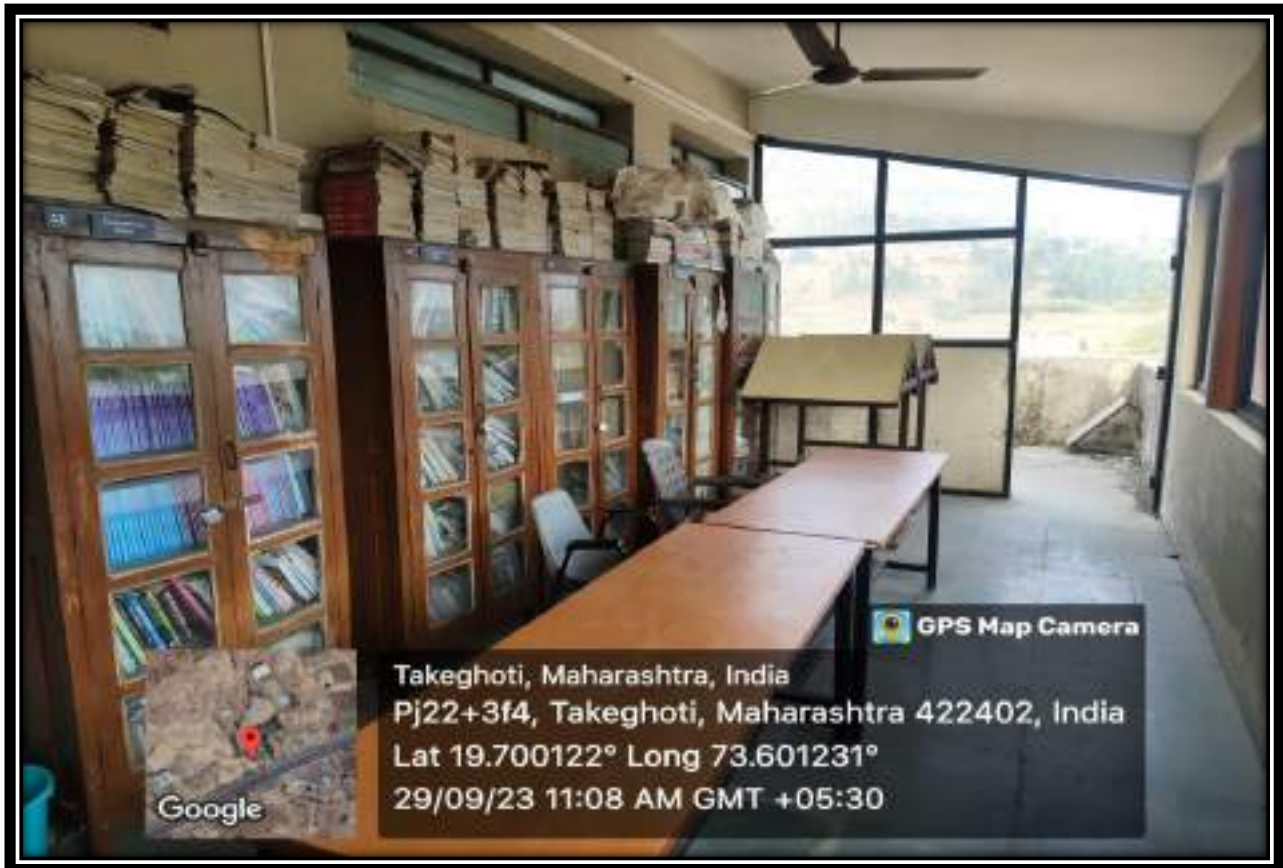
## Solar Panel



## Solar Control Unit



## Library



## Library Stack Room





## 5. Drinking Water Facility







## Water Storage Tank



**Co-ordinator**  
**IQAC**  
K.P.G.Arts Com and Sci.College,  
Igatpuri, Dist. Nashik.

**PRINCIPAL**  
M.V.P. Samaj's  
K.P.G. Arts, Com. and Sci.College  
Igatpuri, Dist. Nashik





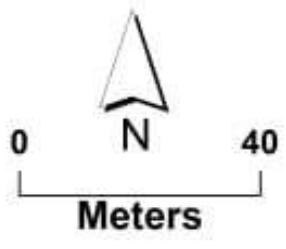
73°36'3"E

73°36'6"E

**Maratha Vidya Prasarak Samaj Nashik**  
**KPG ARTS, COMMERC AND SCIENEC**  
**COLLEGE, IGATPURI**  
**Campus Canopy Cover (2023)**

19°42'6"N

19°42'6"N



19°42'3"N

19°42'3"N

**Legend**

- Campus area
- Canopy Cover
- Main Building
- Green Gym
- Girls Gym
- Boys Gym
- Botanical Garden
- Watchman room
- Canteen
- Prop. Hotel Mant. Buil.
- Prop. Medic. Plints Garden
- Running Track
- Prop. Charg. Station
- Parking
- YCMOU
- SDO
- NSS
- National Highway
- Indoor Stadium
- Geo Dept

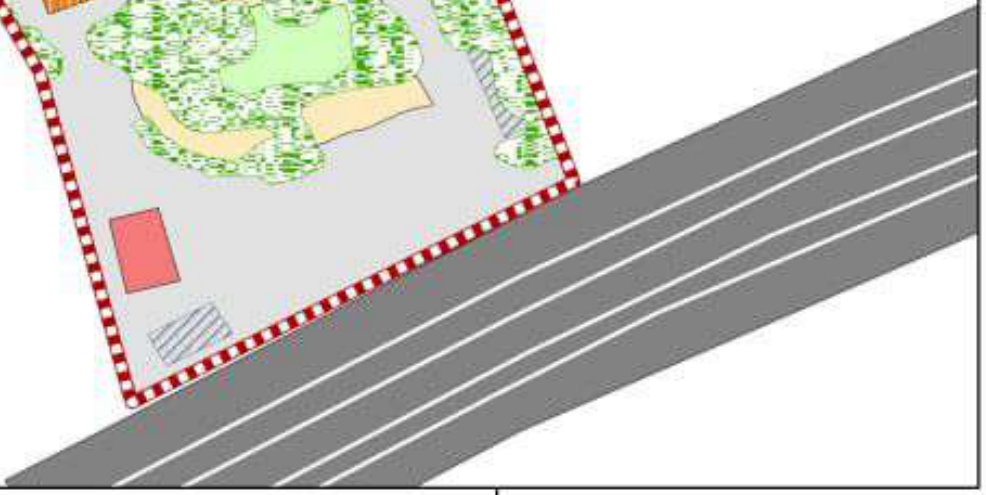
Total Canopy Cove:18.67%

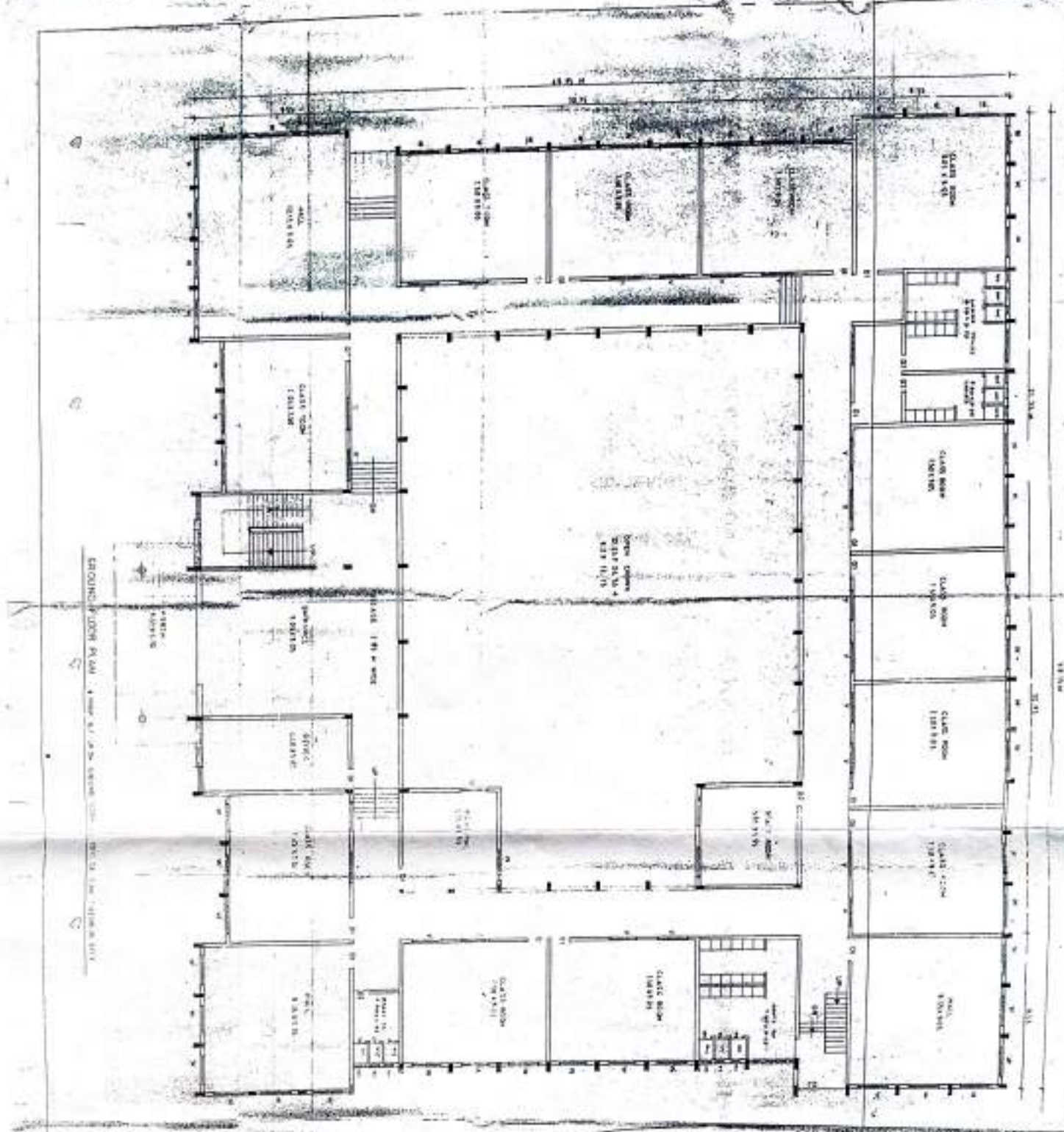
19°42'0"N

19°42'0"N

73°36'3"E

73°36'6"E





GROUND FLOOR PLAN - 4' x 10' 1/2" SCALE - 1912

See also plan of school building

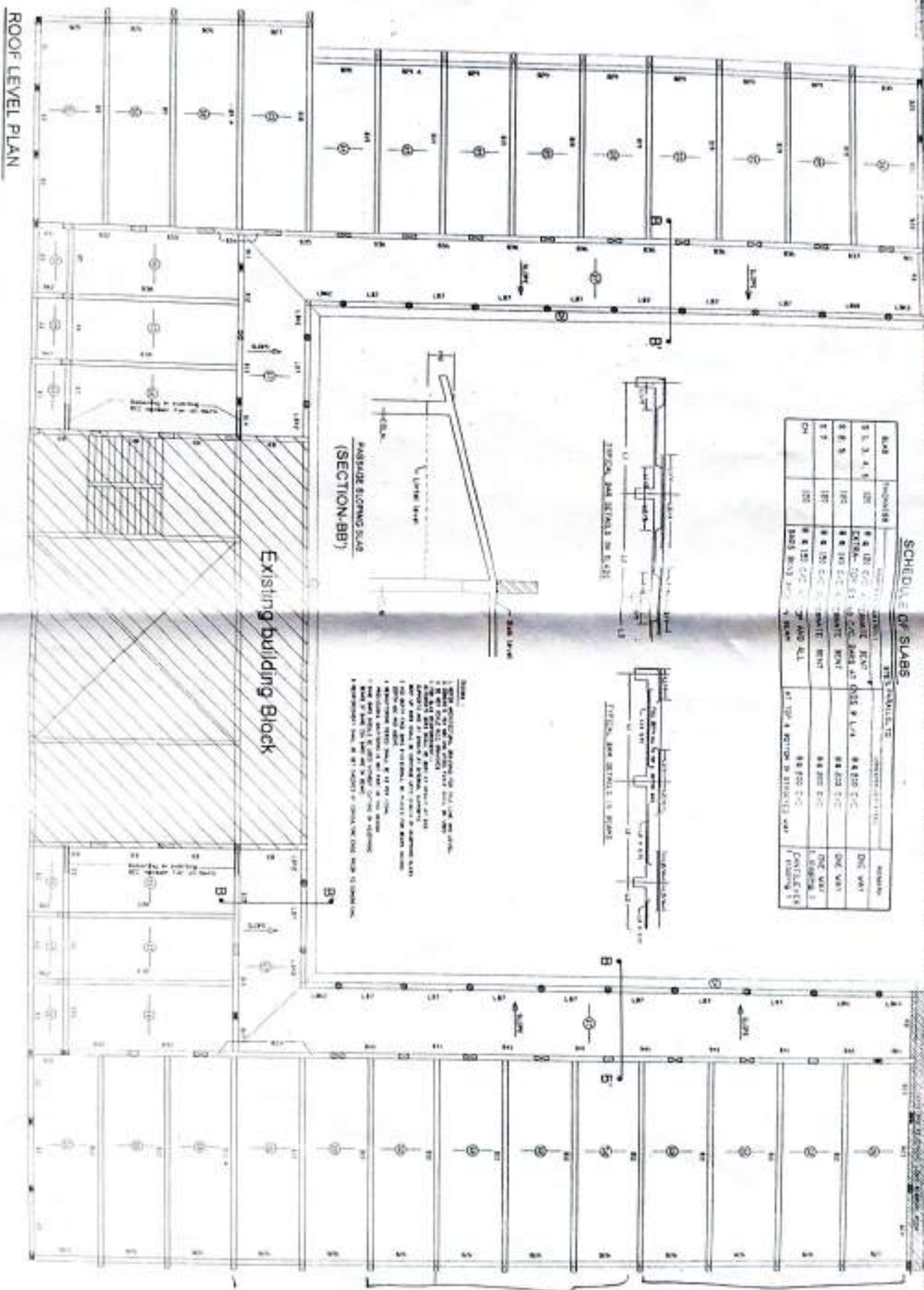
PROJECT: SCHOOL BUILDING ARCHITECT: H. J. HAYES & SONS 100 N. 10th St., St. Paul, Minn. DATE: 1912	
SHEET NO. 1 OF 2	SCALE: 1/4" = 1'-0"
DRAWN BY: H. J. HAYES	CHECKED BY: H. J. HAYES

NOTES: 1. SEE PLAN OF SCHOOL BUILDING FOR DETAILS OF INTERIOR FINISHES AND EQUIPMENT.  
 2. SEE PLAN OF SCHOOL BUILDING FOR DETAILS OF EXTERIOR FINISHES AND EQUIPMENT.  
 3. SEE PLAN OF SCHOOL BUILDING FOR DETAILS OF MECHANICAL EQUIPMENT.  
 4. SEE PLAN OF SCHOOL BUILDING FOR DETAILS OF ELECTRICAL EQUIPMENT.



SCHEDULE OF SLABS

Slab	Thickness	Concrete	Reinforcement	Notes	Remarks
S.L. 3.4.1	100	Grade 40	Grade 40	EXTERIOR WALL AT DOTS & LINES	ONE WAY
S.L. 3	100	Grade 40	Grade 40	INTERIOR WALL	ONE WAY
S.L. 4	100	Grade 40	Grade 40	INTERIOR WALL	ONE WAY
CH	100	Grade 40	Grade 40	AT TOP & BOTTOM OF INTERIOR WALL	CONCRETE



RAISED SLAB ON EDGE  
(SECTION-BB1)

TYPICAL WALL DETAIL IN SLAB  
(SECTION-BB2)

Existing building Block

ROOF LEVEL PLAN

TITLE

ROOF SLAB DETAILS

PROJECT

PROPOSED EXTENSION ON FIRST FLOOR OF EXISTING COLLEGE  
RUMAHKITAJAR (GATOTJAJI) SAMPANG DISTRICT

DESIGNED BY: DINA CONSULTING SURVEY & ARCHITECTURE

DR. P. DINDAH

10/10/2024